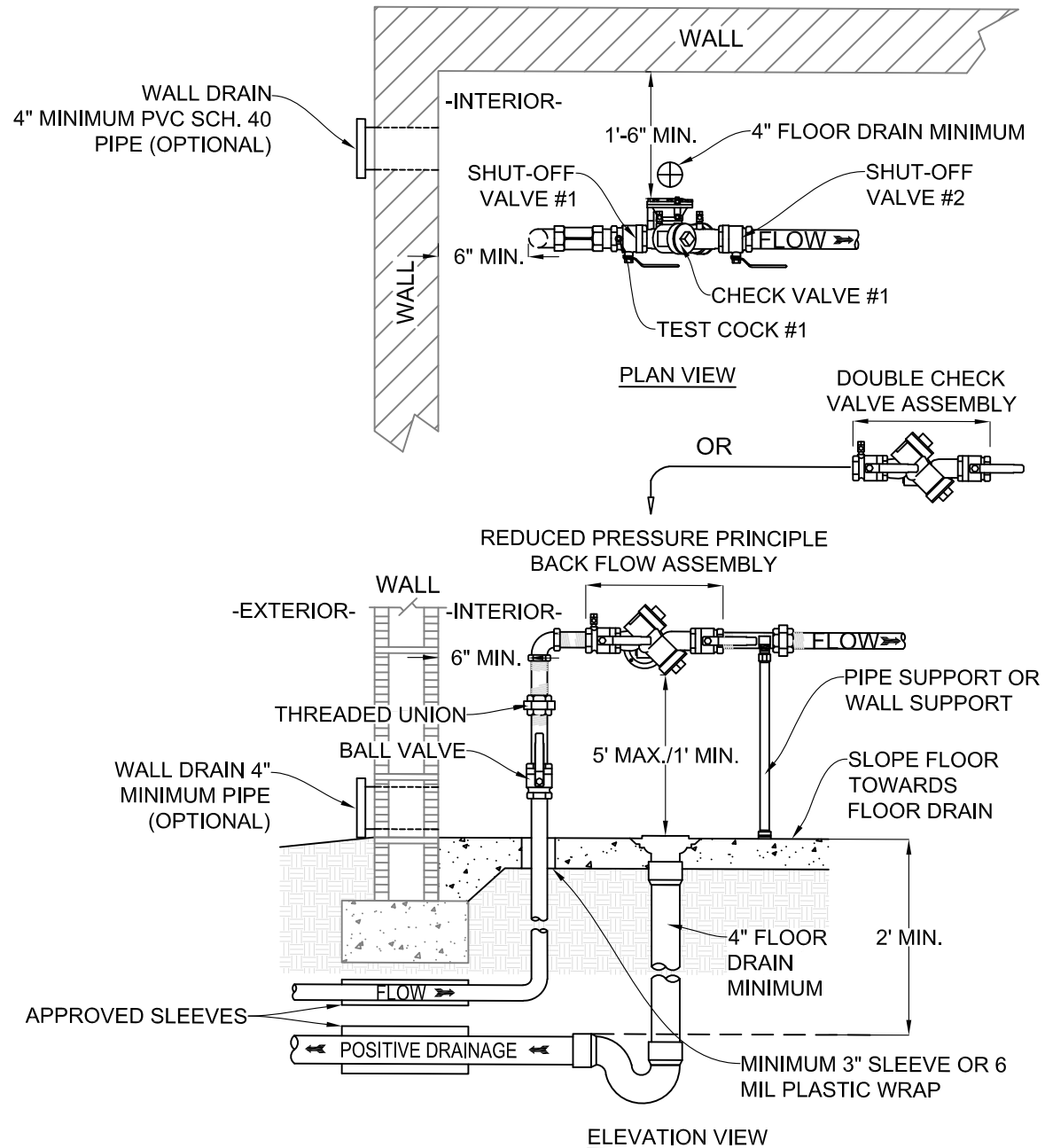


NOTES:

1. REDUCED PRESSURE PRINCIPLE BACKFLOW PREVENTION ASSEMBLY SHALL COMPLY WITH ASSE 1013 & AWWA C511.
2. DOUBLE CHECK BACKFLOW PREVENTION ASSEMBLY SHALL COMPLY WITH ASSE 1015 & AWWA C510.
3. BACKFLOW PREVENTION ASSEMBLY SHALL MAINTAIN MINIMUM CLEARANCES FROM WALLS AND FLOOR AS SPECIFIED.
4. ALL BACKFLOW PREVENTERS SHALL BE LOCATED IN A LOWEST FLOOR ROOM (1HR FIRE RATED) WITH AN EXTERIOR DOOR WITH DIRECT ACCESS FROM THE OUTSIDE.
5. PIPE MATERIAL SHALL MEET CURRENT NC PLUMBING CODE TABLE 605.3 (OUTSIDE) AND TABLE 605.4 (INSIDE).
6. INSTALLATION SHALL BE IN COMPLIANCE WITH ALL APPLICABLE TOWN ORDINANCES AND SPECIFICATIONS, USCFCCCHR CODE AND THE NC PLUMBING CODE.
7. PROPERTY OWNER SHALL BE RESPONSIBLE FOR MAINTENANCE AND OPERATION OF BACKFLOW ASSEMBLY AND COMPLIANCE WITH REPORTING AND TESTING REQUIREMENTS.
9. ALL BACKFLOW PREVENTERS SHALL MEET CURRENT UNIVERSITY OF SOUTHERN CALIFORNIA FOUNDATION FOR CROSS-CONNECTION AND HYDRAULIC RESEARCH REQUIREMENTS.
10. ALL DRAINS SHALL BE SIZED TO MEET MAX CAPACITY RELEASE FROM A REDUCED PRESSURE BACKFLOW ASSEMBLY.
11. ALL BACKFLOW PREVENTERS SHALL BE "LEAD FREE".



**TOWN OF APEX
STANDARDS**

EFFECTIVE: MARCH 6, 2018

**3/4" to 2" COMMERCIAL INDOOR BACKFLOW
ASSEMBLY (DOMESTIC SERVICE)**

STD. NO.

620.05

SHEET 1 OF 1