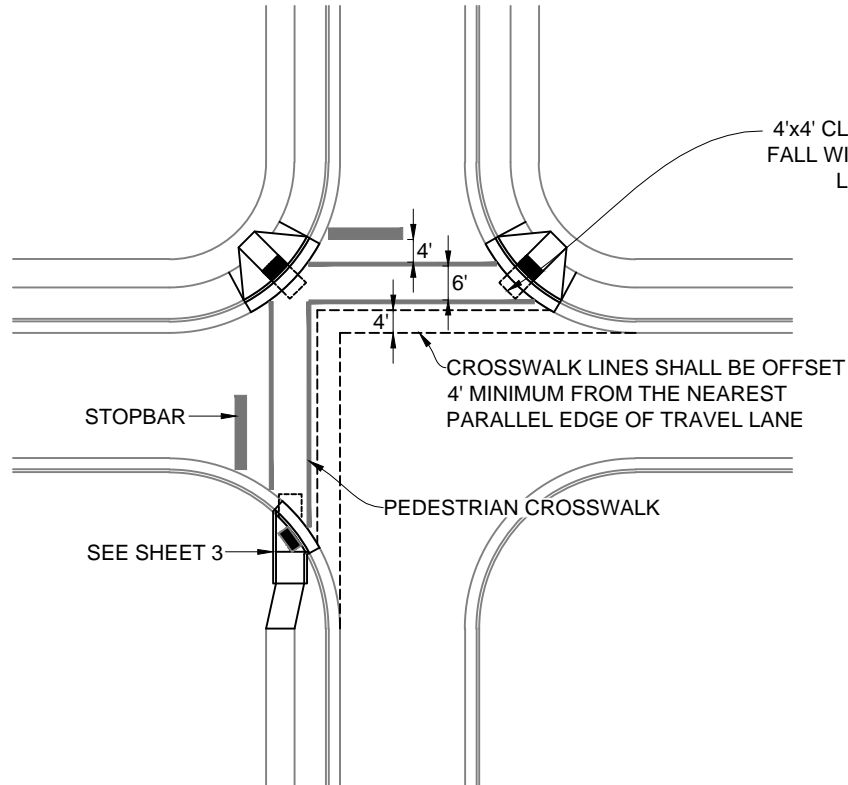
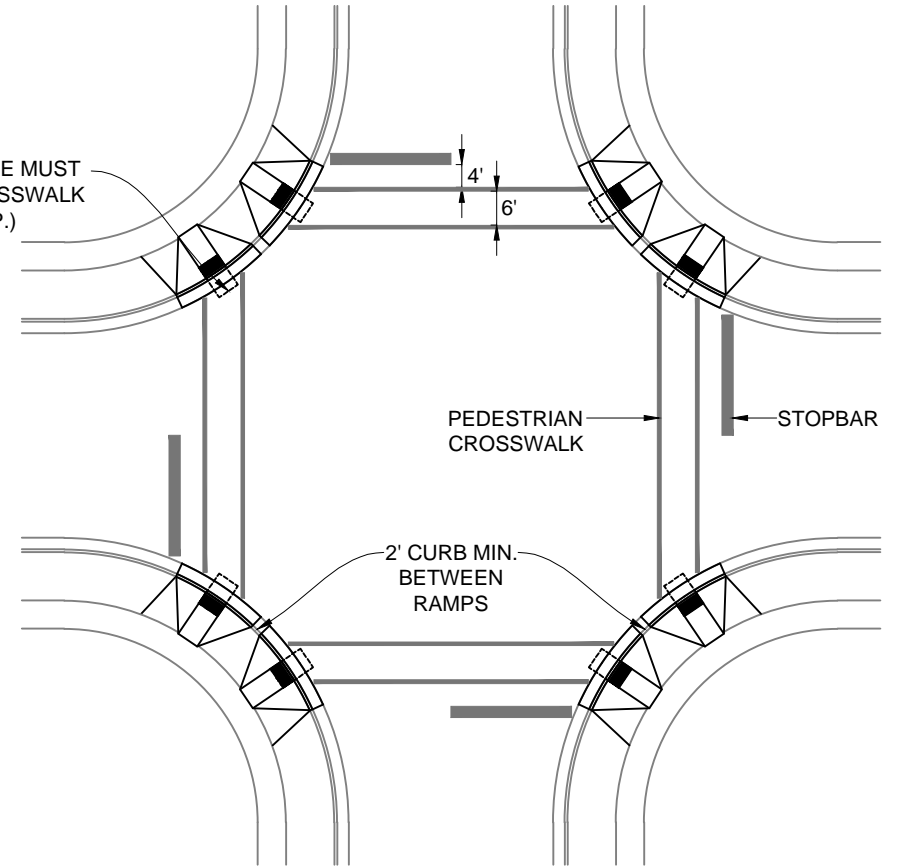


DETAIL SHOWING TYPICAL LOCATION OF WHEELCHAIR  
RAMPS, PEDESTRIAN CROSSWALKS, & STOP LINES

RESIDENTIAL STREETS



COLLECTORS & THOROUGHFARES



TOWN OF APEX  
STANDARDS

EFFECTIVE: DECEMBER 18, 2012

**CURB RAMP**

STD. NO.

**300.09**

SHEET 2 OF 3