

TOWN OF APEX  
STANDARDS

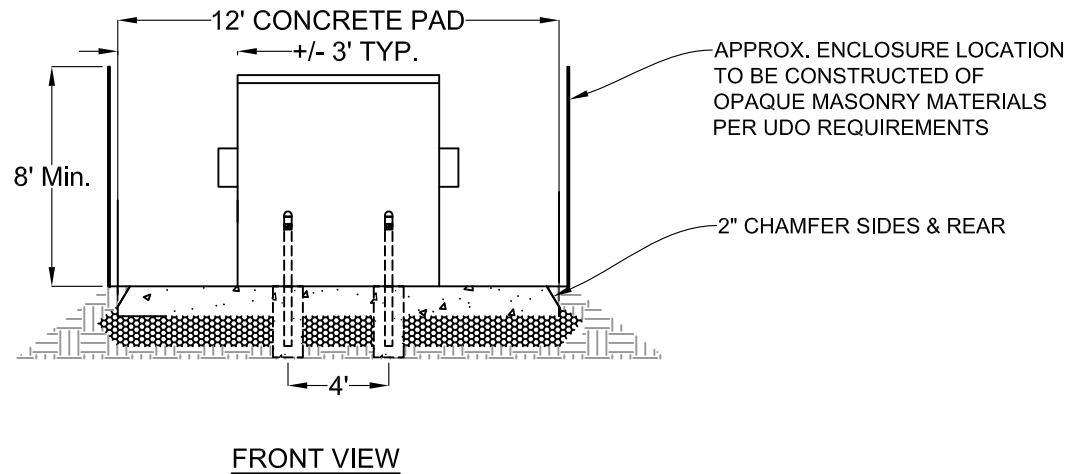
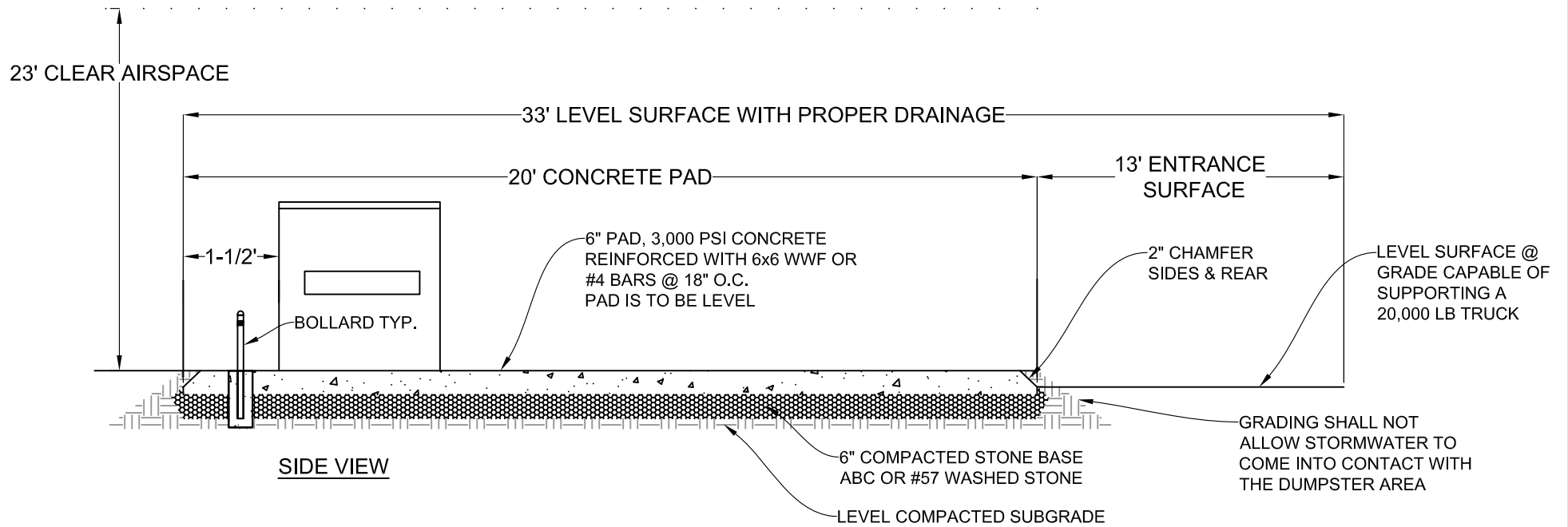
EFFECTIVE: DECEMBER 3, 2002

# UNDERGROUND ELECTRICAL SERVICE CONNECTION

STD. NO.

**200.01**

SHEET 1 OF 1



**GENERAL NOTES:**

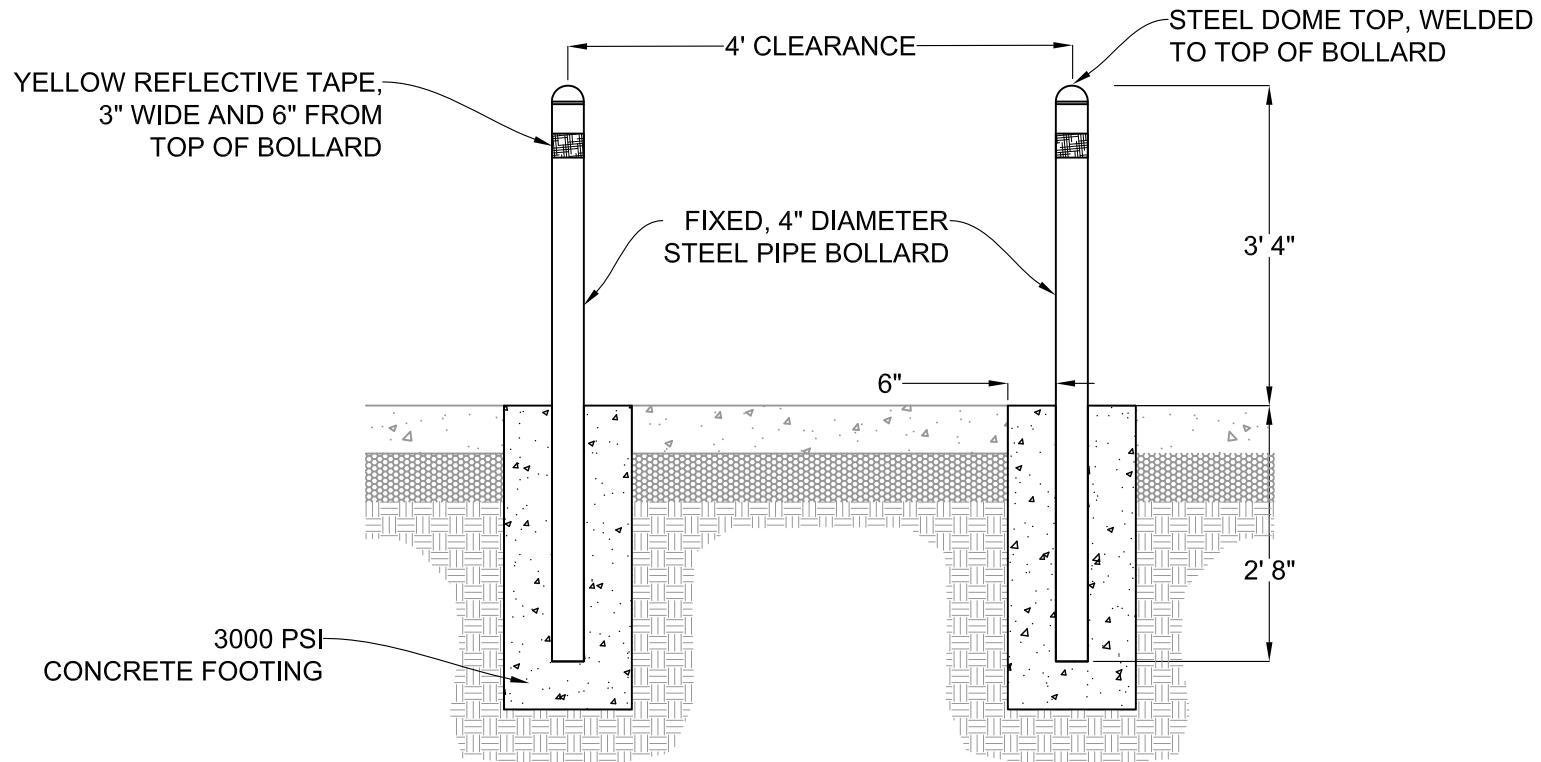
1. NO OBSTRUCTION SHALL BE PERMITTED WITHIN 23' ABOVE DUMPSTER PAD OR ENTRANCE.
2. FENCING MUST BE PLACED OUTSIDE OF PAD. GATES SHALL HAVE 12' CLEAR OPENING. FENCING SHALL BE INSTALLED ON THREE SIDES WITH A GATE ON THE REMAINING SIDE.

**UDO REQUIREMENTS:**

1. DUMPSTERS SHALL BE SCREENED WITH AN ENCLOSURE, FENCE OR WALL THAT REACHES 8 FEET IN HEIGHT OR THE HEIGHT OF THE DUMPSTER WHICHEVER IS HIGHER.
2. GATES OR DOORS ON DUMPSTER ENCLOSURE SHALL BE CONSTRUCTED OF OPAQUE METAL.
3. VEGETATION IS REQUIRED TO BE PLANTED OUTSIDE OF THE ENCLOSURE.

# BOLLARD DETAIL

NO SCALE



FRONT VIEW

**NOTE:**

ALL METAL SHALL BE GALVANIZED PAINT, ONE COAT METAL PRIMER AND TWO COATS BLACK METAL ENAMEL OR VINYL COATING/COVERING.

TOWN OF APEX  
STANDARDS

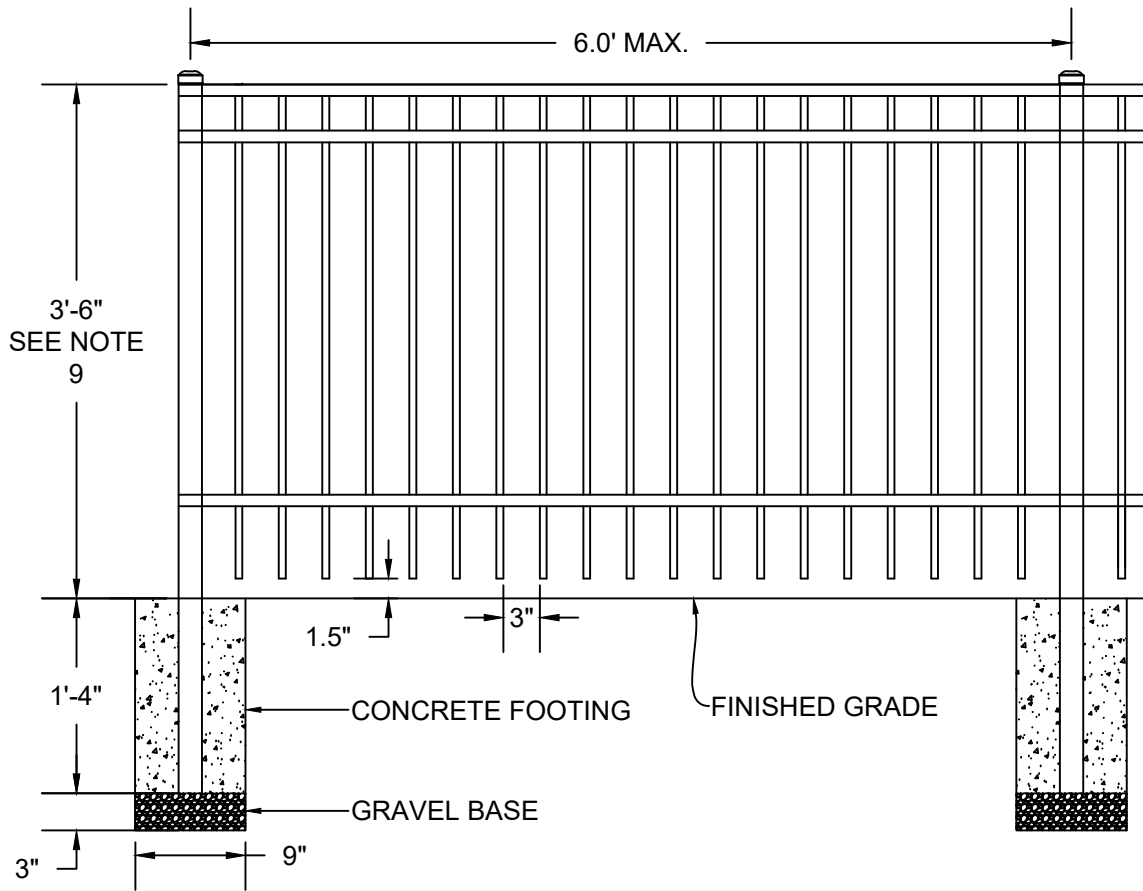
EFFECTIVE: DECEMBER 21, 2010

DUMPSTER PAD

STD. NO.

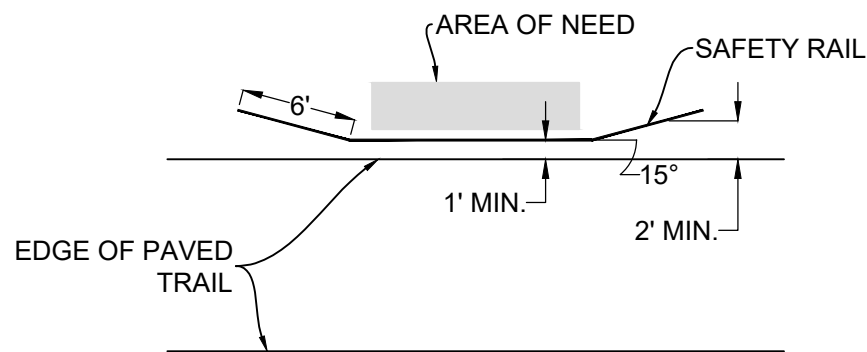
200.02

SHEET 2 OF 2



**NOTES:**

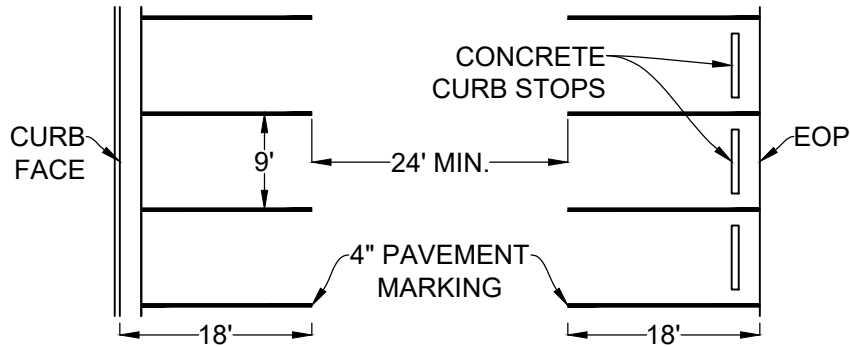
1. POSTS SHALL BE MINIMUM 2" SQUARE x 0.060" WALL ALUMINUM WITH INTERIOR REINFORCING WEB.
2. PICKETS SHALL BE MINIMUM 0.75" SQUARE x 0.045" WALL ALUMINUM.
3. RAILS SHALL BE MINIMUM 1" SQUARE x 0.060" WALL ALUMINUM.
4. ALUMINUM SHALL CONFORM TO ASTM B221. ALUMINUM EXTRUSIONS FOR POSTS AND RAILS SHALL BE ALLOY AND TEMPER DESIGNATION 6005-T52. ALUMINUM EXTRUSIONS FOR PICKETS SHALL BE ALLOY AND TEMPER DESIGNATION 6063-T52.
5. ALL ALUMINUM SHALL HAVE ELECTROSTATICALLY APPLIED TGIC POLYESTER POWDER COAT FINISH, BLACK COLOR, 2 MILS MINIMUM THICKNESS.
6. ALL CONCRETE SHALL BE 3600 P.S.I. COMPRESSIVE STRENGTH.
7. A PEDESTRIAN HAND RAIL MAY BE INSTALLED AT A HEIGHT OF 34 INCHES, OR A BICYCLE RUB RAIL AT A HEIGHT OF 36 INCHES ON THE SAFETY RAIL.
8. ON BRIDGES AND RETAINING WALLS ANCHOR BOLTS THAT MEET MANUFACTURER SPECIFICATIONS SHALL BE USED TO SECURE SAFETY RAIL.
9. ON BRIDGES A 4-FOOT TALL SAFETY RAIL MAY BE REQUIRED TO PREVENT CYCLISTS FROM FALLING OVER.
10. PROVIDE 2-FOOT LATERAL CLEARANCE FROM PAVED TRAIL. WHERE LESSER CLEARANCE IS NEEDED, PROVIDE FLARED END TREATMENTS.
11. WHERE HAND RAIL IS RETROFITTED, INSTALL SAFETY RAIL 1 FOOT FROM EDGE OF PAVED TRAIL WITH FLARED END TREATMENTS BEYOND THE AREA OF NEED.



METHOD OF FLARING END TREATMENTS (NOTES 10 AND 11)

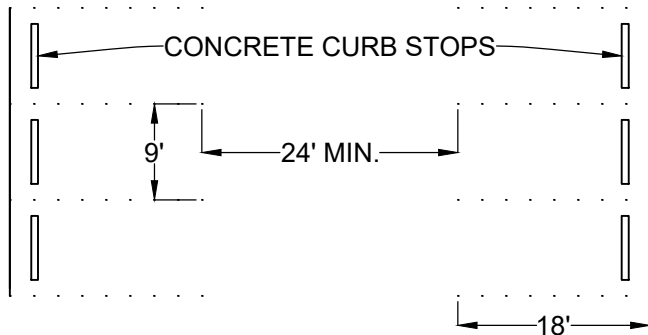
<p><b>TOWN OF APEX STANDARDS</b></p>	<p><b>SAFETY RAIL</b></p>	<p>STD. NO. <b>200.03</b></p>
<p>EFFECTIVE: JANUARY 12, 2021</p>		<p>SHEET 1 OF 1</p>

**PAVED PARKING, 90°**



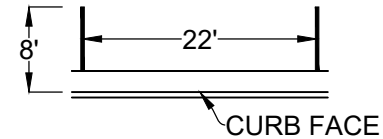
**PAVEMENT LOT STRUCTURE**  
 2" ASPHALT SURFACE COARSE  
 6" AGGREGATE BASE COARSE  
 COMPACTED SUBGRADE

**GRAVEL PARKING**



**GRAVEL LOT STRUCTURE**  
 1.5" #78M STONE  
 6" AGGREGATE BASE COARSE  
 COMPACTED SUBGRADE

**PAVED PARKING, PARALLEL**

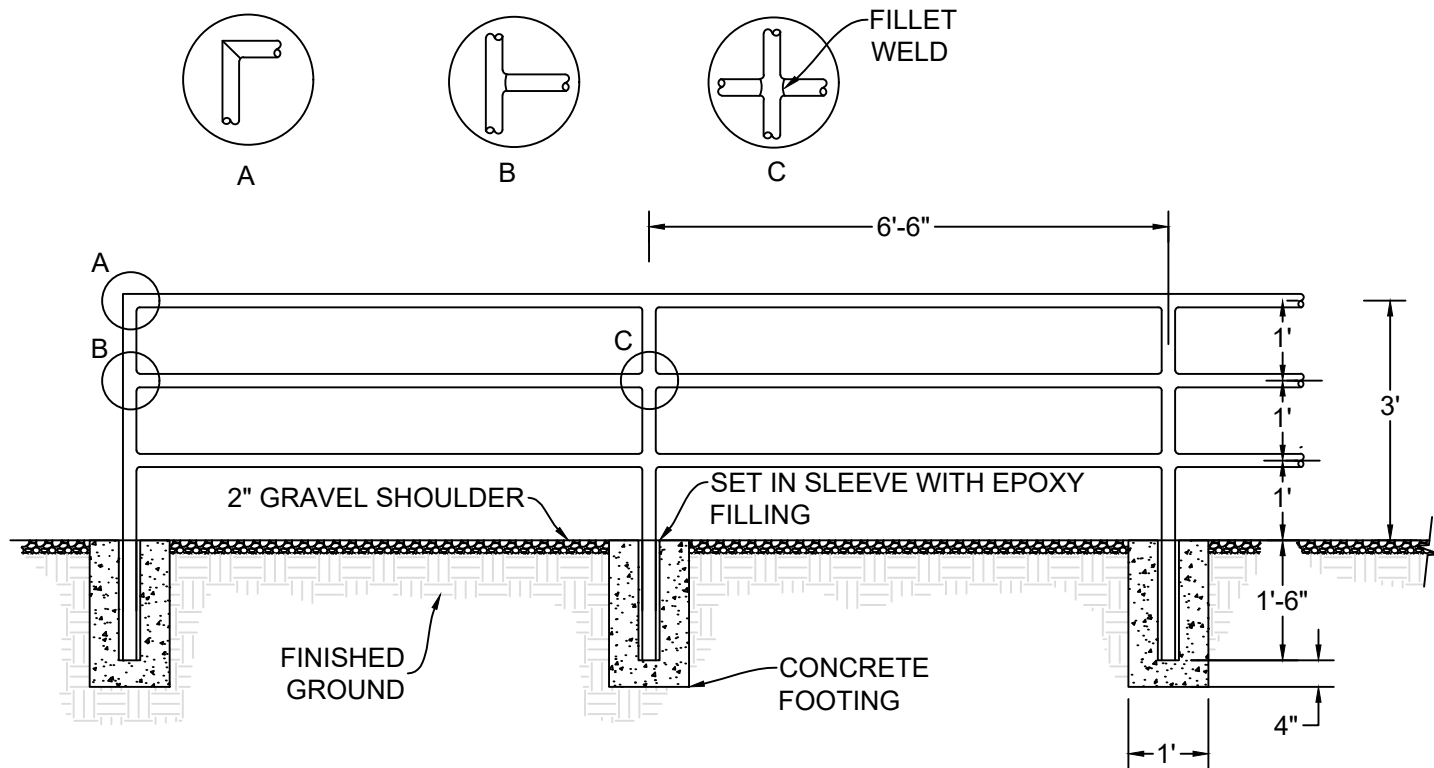


**NOTES FOR PAVED PARKING LOTS:**

1. CONCRETE STOP NOT REQUIRED IF CURB IS USED. IF SIDEWALK IS AGAINST BACK OF CURB, A MINIMUM 6' WIDTH IS REQUIRED WITHOUT CURB STOPS.
2. AN ELECTRIC PLAN MUST BE SUBMITTED TO THE PLANNING AND ELECTRIC DEPARTMENTS FOR APPROVAL.
3. A PLANTING PLAN MUST BE SUBMITTED TO THE PLANNING DEPARTMENT FOR APPROVAL.
4. NUMBER OF REQUIRED ADA SPACES FOR PAVED PARKING AREAS ARE LISTED IN THE CURRENT NC BUILDING CODE.
5. ALL ADA PARKING SPACES MUST DIRECTLY CONNECT TO PUBLIC ACCESS ROUTES THAT MEET ADA REQUIREMENTS.
6. ADA PARKING SPACES MUST MEET ADA DIMENSIONS.

**NOTES FOR GRAVEL PARKING LOTS:**

1. DRIVE AISLES MUST BE REPAIRED OR REPLACED WITH #78M STONE EVERY SIX (6) MONTHS.
2. AN ELECTRIC PLAN MUST BE SUBMITTED TO THE PLANNING AND ELECTRIC DEPARTMENTS FOR APPROVAL.
3. A PLANTING PLAN MUST BE SUBMITTED TO THE PLANNING DEPARTMENT FOR APPROVAL.



**NOTES:**

1. METAL HAND RAIL SHALL BE INSTALLED 1 FOOT FROM THE EDGE OF PAVED TRAIL ON CENTER.
2. PROVIDE FLARED END RAIL TREATMENTS AT 15 DEGREES AWAY FROM THE TRAIL BEYOND THE AREA OF NEED. FLARED END TREATMENTS SHALL EXTEND TWO FEET MINIMUM FROM THE EDGE OF TRAIL.
3. THE TOP RAIL SHALL BE INSTALLED AT A HEIGHT OF 3 FEET FROM THE FINISHED GROUND.
4. ALL CONCRETE FOOTINGS FOR HAND RAIL SHALL MEET 3,600 PSI COMPRESSIVE STRENGTH.
5. ALL HAND RAIL METAL JOINTS SHALL HAVE A ½ INCH WIDE FILLET WELD.
6. PRIME AND PAINT METAL HAND RAIL WITH BLACK ALL WEATHER ENAMEL PAINT AFTER INSTALLATION.

**TOWN OF APEX  
STANDARDS**

EFFECTIVE: JANUARY 12, 2021

**HANDRAIL**

STD. NO.

**200.05**

SHEET 1 OF 1