

SENSITIVE DEVELOPMENT AREAS

- 


Preserve existing structures through adaptive reuse.
- 

Preserve juxtaposition of wooded curve and white-fenced pasture.
- 

Retain old country store character. No paved parking in front.
- 

Preserve open field and viewshed to pond.
- 


Screen backs of structures from the street.
- 

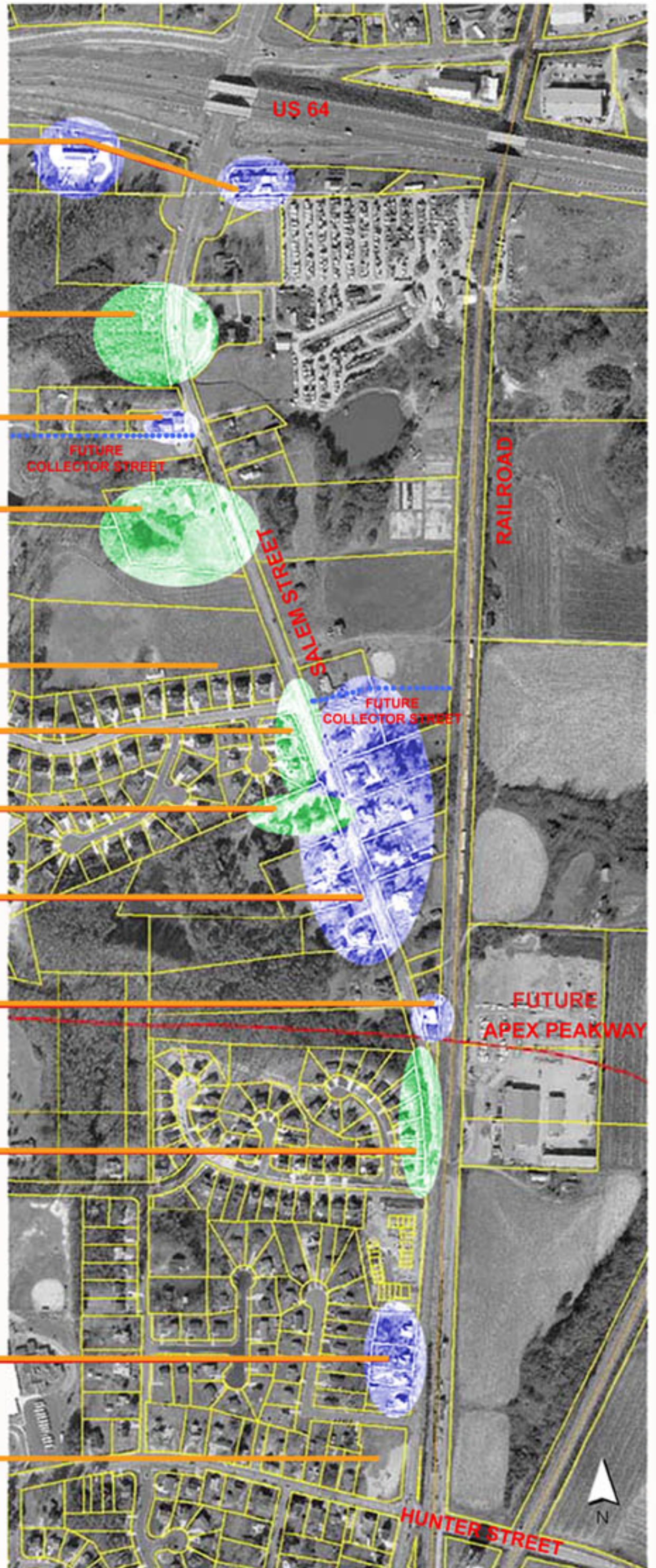
Remove extra-wide turn lane and re-landscape.
- 

Preserve Dr. Pearson's allee of southern magnolias.
- 


Preserve character of older and historic structures, homes and outbuildings.
- 

Maintain meandering sidewalk through pines without curb and gutter.
- 


Preserve scale of smaller homes.



Aerial photograph flown February 1999

SCALE: 1" = 400' - 0"