



January 4, 2021

Subject: Jessie Drive Phase 1 Final Design – Sweetgum Access Alternative

To Whom It May Concern:

The Town of Apex held a public workshop on July 15, 2020 to present the public meeting map for the Jessie Drive Phase 1 (Ten Ten Road to Production Drive) Final Design and receive public input. Comments were received prior to, during, and following the workshop concerning a variety of issues related to the project. Many concerns were related to the median restricting Sweetgum Drive to only right-in/right-out movements at Jessie Drive. This would require U-turn movements east and west of the intersection. Due to the close proximity of Sweetgum Drive to Ten Ten Road, left turns will not be permitted. See Exhibit 1 for an image of the median and U-turn bulb-out.

In the months following the workshop, while roadway design efforts have continued, the Town and our consultants have been exploring options for left turn access to Sweetgum Drive. We received feedback in December 2020 from the NC Department of Transportation concerning our proposal to connect a new access alternative road from Sweetgum Drive to Jessie Drive for a full-movement intersection serving the subdivision. On Jessie Drive, the new road would connect approximately where the U-turn bulb-out would have been located, and on Sweetgum Drive, it would connect along the lot line between 2512 and 2528 Sweetgum Drive. See Exhibit 2 for an image of the Sweetgum Access Alternative that could replace the proposed U-turn bulb-out.

The Town of Apex will hold a public hearing at the regularly-scheduled Town Council meeting, on February 9, 2021 at 6:00 PM. The purpose of this public hearing will be for staff to update Town Council on the current status of the project and for Town Council to consider a possible motion to include the Sweetgum Access Alternative in the roadway plans to replace the proposed U-turn. In addition, there will be a possible motion for keeping the existing Sweetgum Drive access open as a right-in/right-out direct access to Jessie Drive vs. closure and construction of a cul-de-sac.

If you wish to speak in person concerning this item during the public hearing you will need to attend the meeting. However, if you wish to provide comments to be read at the meeting on your behalf those can be submitted prior to the meeting. Information concerning Town Council meetings and public input can be found at: <http://www.apexnc.org/838/Agendas-Minutes> . Project updates will be posted to: <http://www.apexnc.org/371/Road-Sidewalk-Projects> .

Sincerely,

A handwritten signature in blue ink that reads "Russell H. Dalton". The signature is written in a cursive style.

Russell H. Dalton, PE, Senior Transportation Engineer
Russell.Dalton@apexnc.org

Attached (see reverse): Exhibit 1 & 2

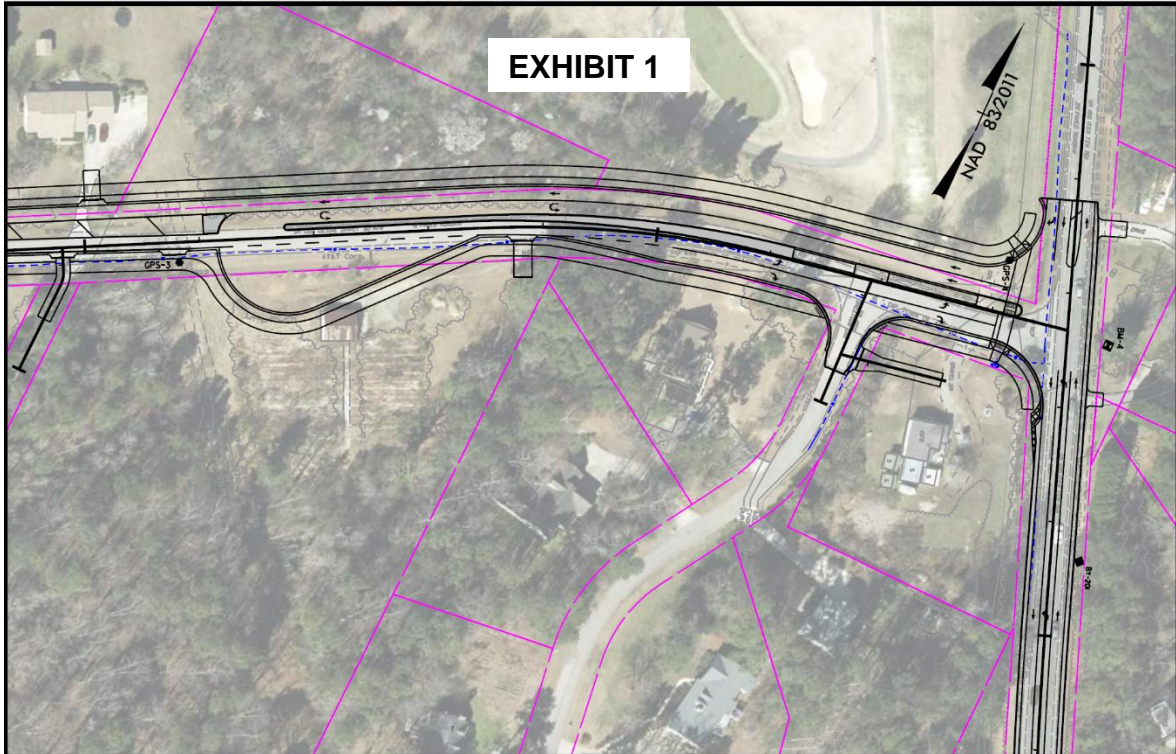
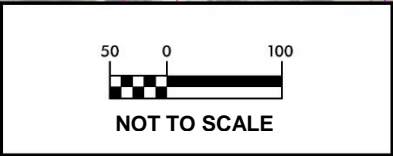


EXHIBIT 1

PREPARED BY:
Kimley » Horn
 421 FAYETTEVILLE STREET, SUITE 600
 RALEIGH, NC 27601
 PHONE: (919) 677-2000
 FAX: (919) 677-2050
 PE NO. F-0102



**JESSIE DRIVE
 U-TURN
 SWEETGUM ACCESS**

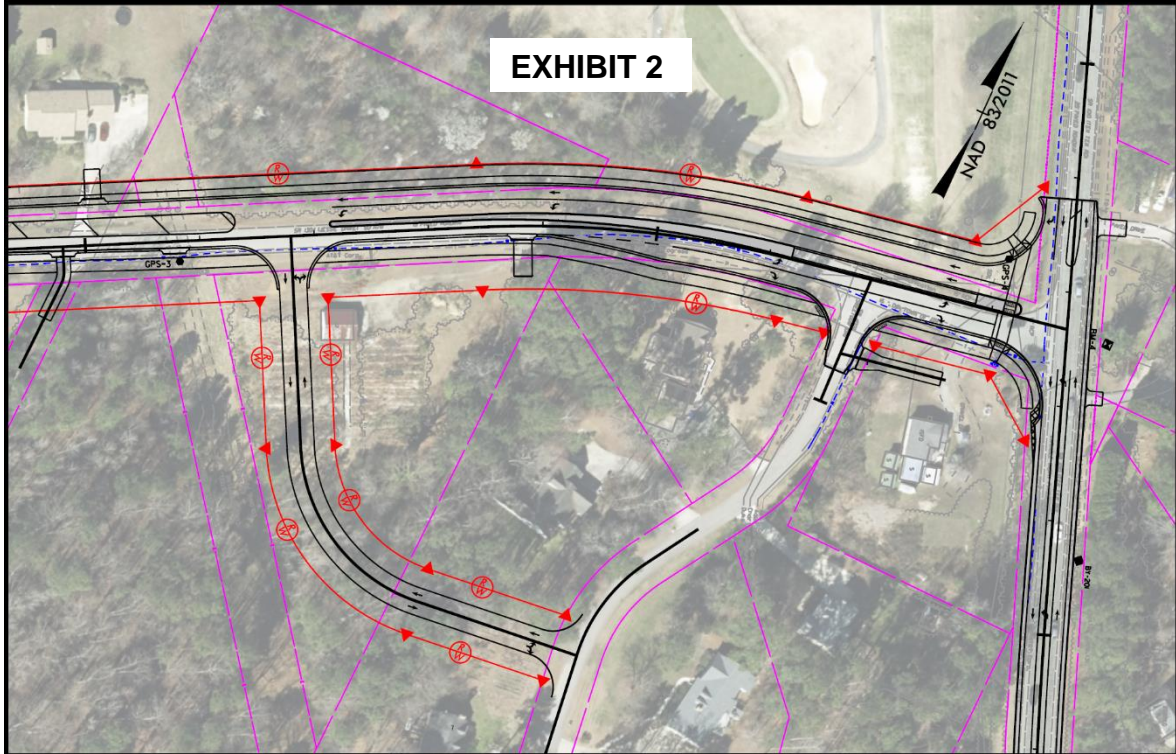
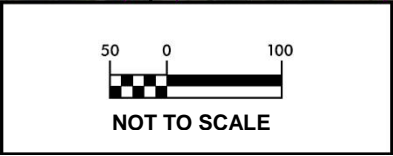


EXHIBIT 2

PREPARED BY:
Kimley » Horn
 421 FAYETTEVILLE STREET, SUITE 600
 RALEIGH, NC 27601
 PHONE: (919) 677-2000
 FAX: (919) 677-2050
 PE NO. F-0102



**JESSIE DRIVE
 SWEETGUM ACCESS
 ALTERNATIVE**